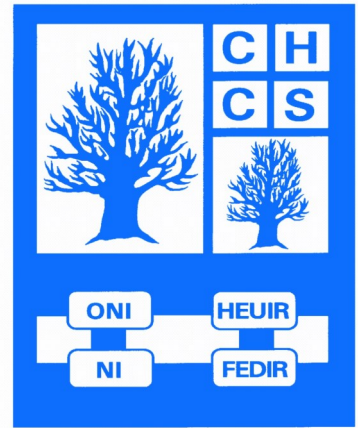


Ysgol Gymunedol
Cefn Hengoed
Community School



If you believe it
you can achieve it!

Key Stage 4

A Guide for Parents



Facebook
@chcommunityschool

Cefn Hengoed Community School
Caldicot Road, Winch Wen, Swansea SA1 7HX
www.cefnhengoed.net
01792 773464

Twitter
@cefnhengoed





Notes







Parents – How you can make a difference

Education has changed so much over the years what with different courses (GCSEs, Vocational GCSEs, BTECs etc.), coursework, modular exams, entry tiers and controlled assessments. The names of the different stages have also changed – your child has now entered Key Stage 4 (Years 10 and 11). With so many different systems in place, it is easy to feel at a loss on how you can help your child fulfil their potential.

As a school, we need to work with you in ensuring your child gets the best possible GCSE results – and that is the point of this Parental Guide.

Your involvement can make an enormous difference – the difference between a pass or a fail. Research tells us that parental support is eight times more important in determining a child's academic success than social class. Parental involvement can mean the difference between an A* and an 'also-ran' at GCSE.

This parental guide will hopefully provide clear and practical information on how you can best help your child during their GCSE years at Cefn Hengoed. Of course the school has an important role to play too.

It will provide the expertise and resources to help your child acquire the knowledge, skills and understanding they need to succeed.

Hopefully, by working together, we can help your child reach their full potential. We value the partnership that exists between home and school. Please keep us informed of situations at home that are likely to impact on your child's performance, ensure your child attends school regularly and keep a check on their homework and coursework deadlines. Parents' Evenings are held once a year in Year 10 and Year 11 – please attend and find out how your child is doing and how you can help them improve.

Perhaps the hardest demand on Year 10 and Year 11 pupils is that of understanding the long term importance of doing the best they can now and putting aside short term fun in the interest of long term benefits. That is certainly not to say that Key Stage 4 has to be no fun at all, but there needs to be a balance and you can help your child achieve that. Your support, encouragement and interest can make a spectacular difference to your child's motivation and ability to cope with the academic and organisational demands of the exam years.

Whatever your individual child's needs, your chief role will always be that of person who cares most in the world, admirer of every achievement and provider of every need.



Welcome/Croeso/The Year Ahead

MR C BALE - HEADTEACHER

Academic/Pastoral/16+ Transition

MR L HARRINGTON - KEY STAGE 4 SCHOOL MANAGER

Core Subject - Science

MR HAVARD

Core Subject - English

MRS VARNEY

Core Subject - Mathematics

MR KING

Q&A



Key Dates at Cefn Hengoed

School Terms and Holidays 2021/22

			Mid Term Holidays			
Term	Term Begins	Term Ends	Begins	Ends	Term Begins	Term Ends
Autumn 2021	2 Sept 2021	22 Oct 2021	25 Oct 2021	29 Oct 2021	1 Nov 2021	17 Dec 2021
Spring 2022	4 Jan 2022	17 Feb 2022	21 Feb 2022	25 Feb 2022	28 Feb 2022	8 Apr 2022
Summer 2022	25 Apr 2022	27 May 2022	30 May 2022	3 Jun 2022	6 Jun 2022	22 Jul 2022

Important Dates:

Controlled Assessment/Non Examination Assessment	Throughout the year
GCSE Written Exams (November Series)	1 - 10 November 2021
Year 11 Mock Examinations	15 - 26 November 2021
GCSE Written Exams (January Series)	5 - 17 January 2022
Year 11 Reports issued	January 2022
Year 11 Parents' Evening	19 January 2022
BTEC Written Exams (February Series)	2 February 2022
Year 10 Mock Examinations	28 February - 11 March 2022
Year 11 Help Your Child Revise over Easter	24 March 2022
Year 10 Parents' Evening	5 April 2022
GCSE Written Exams DO NOT BOOK ANY HOLIDAYS DURING THIS PERIOD	May and June 2022
Year 10 End of Year Reports issued	July 2022
GCSE Results Day (Years 10 & 11)	August 2022



Neath Port Talbot College

	Date	Time
Afan Campus Brecon Beacons Campus	11 October 2021	4.30pm - 7.00pm
Neath Campus Newton Campus	12 October 2021	4.30pm - 7.00pm
Llandarcy Campus (Sport & Public Services) Swansea Construction Centre	9 February 2022	4.30pm - 7.00pm
Pontardawe Campus (Motor Vehicle)	10 February 2022	4.30pm - 7.00pm



Gower College Swansea

	Date	Time
Gorseinon Campus	8 November 2021	5.30pm - 7.30pm
Tycoch Campus	15 November 2021	5.30pm - 7.30pm
Llwyn y Bryn Campus	16 November 2021	5.30pm - 7.30pm
Jubilee Court	10 November 2021	5.30pm - 7.30pm



Sixth Forms / Year 12

	Date	Time
Morrison	12 January 2022	6.00pm - 8.00pm
Bishop Gore	16 September 2021	3.45pm - 6.30pm
Bishop Vaughan	21 October 2021	tbc
Olchfa	11 November 2021	5.00pm - 8.30pm

It is the aim of Cefn Hengoed Community School to make the examination experience as stress-free and successful as possible for all candidates.

Hopefully, this booklet will prove informative and helpful for you and your parents. Please read it carefully and show it to your parents so that they are also aware of the examination regulations and the procedures to follow in the event of any problems occurring.

If you or your parents have any queries or need help or advice at any time before, during or after the examinations please contact:



The school telephone number is ☎ **01792 773464**

*Remember - we are here to help!
Good Luck!!*

Learning Coaches

The school employs three Learning Coaches. They are based in the Learning Resource Centre (LRC), where they have access to a set of laptops and other equipment aimed at helping the learning of pupils in KS4 (Years 10 & 11).

Pupils are assigned a Learning Coach by the KS4 School Manager (Mr Harrington), according to their needs.

This could take various forms:

- Coaches may attend lessons with individual/or groups of pupils on a long or short-term basis.
- Individual or groups of pupils may be withdrawn from lessons to work with the Learning Coaches in the LRC, again on a long or short-term basis.
- Pupils may be assigned to the LRC if they have been successful in early-entry exams to pursue key work in targeted subjects in liaison with subject teachers.
- Learning Coaches can be 'booked' for lunch time, or after school sessions, often to help pupils prepare for coursework or Controlled Assessment Tasks (CATs).



KS4 Mathematics

Pupils will work over the course of two years towards two GCSE qualifications, GCSE Numeracy and GCSE Mathematics, at three tiers of entry.

GCSE Numeracy

Numeracy is generally thought of as the mathematics skills that are transferable through many everyday life contexts and applicable in other curriculum areas. This is a new qualification that has been designed alongside employers to highlight how important these skills are for the future job market.

The GCSE specification for Numeracy will enable learners to:

- *develop knowledge, skills and understanding of mathematics and statistical methods, techniques and concepts required for everyday life, in the world of work, and in other general curriculum areas*
- *select and apply appropriate mathematics and statistics in everyday situations and contexts from the real world*
- *use mathematics to represent, analyse and interpret information*
- *acquire and use strategies for problem solving and modelling in context*
- *interpret mathematical results and draw and justify conclusions that are relevant to the context*
- *communicate mathematical information in a variety of forms.*

Assessment

The syllabus aims to test your child's ability to apply their numeracy skills in contextualised situations. It is assessed purely on two exams, one non calculator paper (Unit 1) and one calculator paper (Unit 2). Both of these papers will feature all questions in context. A large part of the assessment will be identifying which information is relevant to solve the problem. Developing reading skills will be very beneficial to help with this aspect.

Equipment Required:

- ✓ **Black** Pen
- ✓ Pencil
- ✓ Ruler
- ✓ Protractor
- ✓ Compass
- ✓ Calculator* (for Unit 2 only)

**Recommended Calculator for Unit 2 - Casio FX-85GT Scientific Calculator*



GCSE Mathematics

GCSE Mathematics will build on and progress from the levels of mathematics expected at the end of KS3 through the National Curriculum Programme of Study for Mathematics. Whilst GCSE Numeracy will assess the mathematics that learners will need in their everyday lives and world of work, GCSE Mathematics will extend to aspects of mathematics needed for progression to scientific, technical or further mathematical study.

It will have an emphasis on those aspects of mathematics required for progression into mathematically related disciplines or employment routes. It will feature problems set both in real-life contexts and within mathematics itself and will encourage learners to employ and evaluate different mathematical techniques.

The GCSE specification for Mathematics will enable learners to:

- *develop knowledge, skills and understanding of mathematical methods, techniques and concepts*
- *make connections between different areas of mathematics*
- *select and apply mathematical methods in both mathematical and real-world contexts*
- *reason mathematically, construct arguments and simple proofs, and make logical deductions and inferences*
- *interpret mathematical results and draw and justify conclusions that are relevant to the context*
- *communicate mathematical information in a variety of forms.*

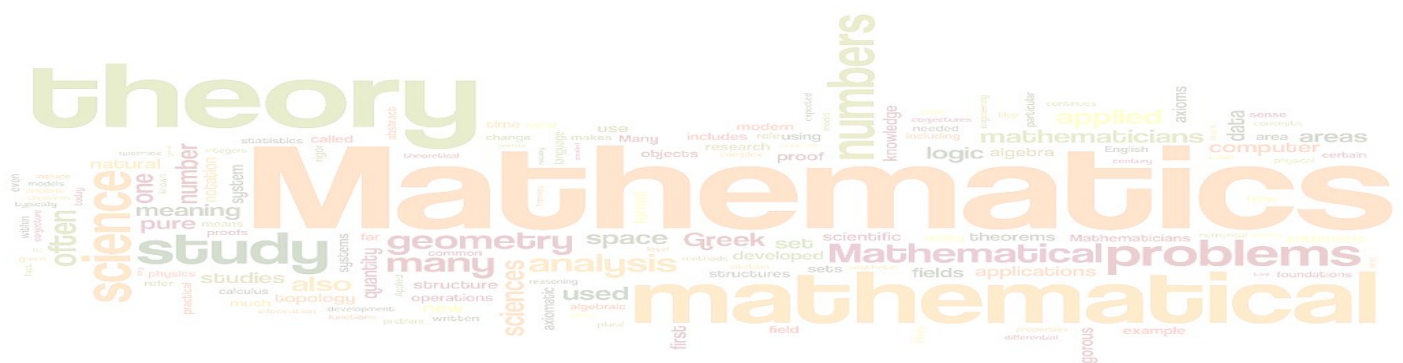
Assessment

This course is assessed with two exams, again one non calculator (Unit 1) and one calculator (Unit 2). It is important to note that ALL of the numeracy skills in the GCSE Numeracy can be assessed again in the GCSE Mathematics examinations.

Equipment Required:

- ✓ **Black Pen**
- ✓ Pencil
- ✓ Ruler
- ✓ Protractor
- ✓ Compass
- ✓ Calculator* (for Unit 2 only)

**Recommended Calculator for Unit 2 - Casio FX-85GT Scientific Calculator*





Tiers of Entry

Both GCSE Numeracy and GCSE Mathematics are offered at three tiers of entry:

Higher Tier

Grades A* to C are available

If your child does not achieve a grade C they would receive an unclassified grade U.

This course is designed for pupils aiming for A* and A grades.

Intermediate Tier

Grades B to E are available

This course will be suitable for most pupils.

Foundation Tier

Grades D to G are available

There is an obvious disadvantage to this course as a grade C is not available. However, it may be that your child has not yet developed enough mathematically to sit the Intermediate Tier. It is much more beneficial to spend the time ensuring they achieve a grade at Foundation Tier and then progress on to Intermediate Tier once a grade is secured.

Your child does not have to sit both exams at the same tier and this is something we will be monitoring throughout Year 10 and Year 11.

It is important to note that although there is no continual assessment that will count towards your child's final grade, we will be assessing regularly through mock examinations and past papers to make a judgement on the best tier of entry for your child.

The table below shows how the GCSE Numeracy and GCSE Mathematics papers are structured with 25% of the content allocated to each grade.

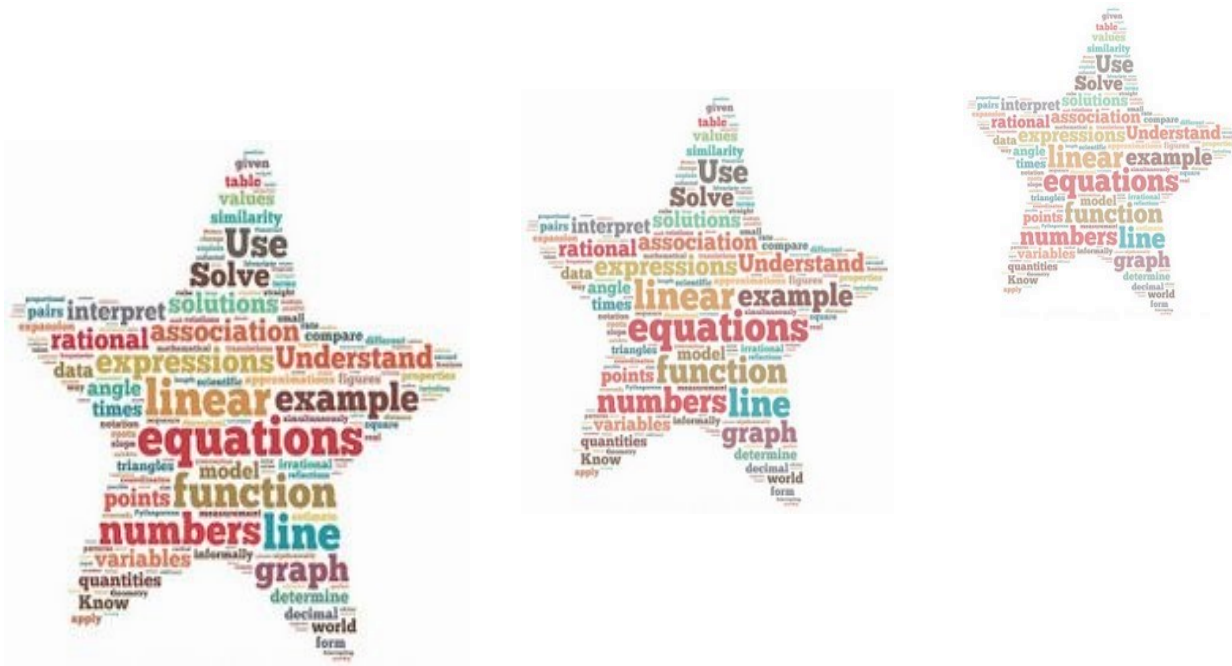
	A*	A	B	C	D	E	F	G
Higher	25%	25%	25%	25%				
Intermediate			25%	25%	25%	25%		
Foundation					25%	25%	25%	25%

It is important to realise that these new examinations are designed to be considerably more demanding in the way questions are structured, with a much bigger focus on problem solving which does take time for learners to develop.

Year 11 Key Dates

After School Revision

Every Wednesday 3pm - 4pm with class teacher



Revision at home

At home your child will need to revise, ideally a little every night by doing examination questions. To support this they will have past examination papers to complete as homework.

Should you wish to use additional revision materials there are a vast amount of free online resources available for your child to access, www.corbettmaths.com and is a great place to look.

GCSE Mathematics and GCSE Numeracy are two GCSE qualifications and do not have any coursework. The result that your child receives will be based solely on how they perform in the examinations so it is crucial they are well prepared and your support in ensuring they attend revision sessions and complete past papers is critical.

If you have any questions regarding any of this information
please feel free to contact the school.



Year 10 and 11

Your son/daughter will follow one of two routes in Science as outlined below.



SCIENCE ROUTE 1

Your son/daughter will be studying the new WJEC GCSE Double Award Science qualification and attain two GCSE grades from A*A*-GG. There are two tiers higher and foundation. Exams will be taken in the summer of year 10 for units 1, 2 and 3 and in the summer of year 11 for units 4, 5, 6. Unit 7 is coursework and will take place in year 11 between January-February. This course will fully prepare learners to study Science A levels. Below is a summary of the units that will be studied.

GCSE in SCIENCE (Double Award) SUMMARY OF ASSESSMENT

There are two tiers of entry for this qualification:
Higher Tier—Grades A*-D
Foundation Tier—Grades C-G

Unit 1: (Double Award) BIOLOGY 1
Written examination: 1 hour 15 minutes
15% of qualification 60 marks

A mix of short answer questions, structured questions, extended writing and data response questions with some set in a practical context. A tiered assessment.

Unit 2: (Double Award) CHEMISTRY 1
Written examination: 1 hour 15 minutes
15% of qualification 60 marks

A mix of short answer questions, structured questions, extended writing and data response questions with some set in a practical context. A tiered assessment.

Unit 3: (Double Award) PHYSICS 1
Written examination: 1 hour 15 minutes
15% of qualification 60 marks

A mix of short answer questions, structured questions, extended writing and data response questions with some set in a practical context. A tiered assessment.

Unit 4: (Double Award) BIOLOGY 2
Written examination: 1 hour 15 minutes
15% of qualification 60 marks

A mix of short answer questions, structured questions, extended writing and data response questions with some set in a practical context. A tiered assessment.

Unit 2: (Double Award) CHEMISTRY 2
Written examination: 1 hour 15 minutes
15% of qualification 60 marks

A mix of short answer questions, structured questions, extended writing and data response questions with some set in a practical context. A tiered assessment.

Unit 3: (Double Award) PHYSICS 2
Written examination: 1 hour 15 minutes
15% of qualification 60 marks

A mix of short answer questions, structured questions, extended writing and data response questions with some set in a practical context. A tiered assessment.

Unit 7: (Double Award) PRACTICAL ASSESSMENT
10% of qualification 60 marks

Practical assessment that will be carried out in centres, but will be externally marked by WJEC. It will take place in the first half of the spring term (January - February). It is recommended that this should be in the final year of study. An untiered assessment.



The GCSE course is challenging and requires your son/daughter to learn, understand and then apply concepts in a given context. The greatest success is achieved when pupils work hard and continually engage in effective revision to consolidate their learning. To help your son/daughter we will be offering after school revision every Tuesday (3-4pm) for all pupils.

The following websites are also available as useful resources:



www.wjec.co.uk/qualifications/science/gcse/science-double-gcse-2016/



<http://www.bbc.co.uk/education/levels/z98jmp3>



https://www.gcsepod.com/gcsepod_content/sciences/

SCIENCE ROUTE 2

Your son/daughter will be studying the WJEC GCSE Single Award in Applied Science in Year 10 and complete a BTEC qualification in Year 11. Both courses utilize a context led approach to Science learning and assessment. It provides insight into, and experience of how Science works, whilst stimulating learners' curiosity and encouraging them to develop an understanding of science, its applications and its relationship to the individual and society.

The course is made up of 4 units as outlined below.

GCSE in APPLIED SCIENCE (Single Award) SUMMARY OF ASSESSMENT

Unit 1: (Single Award) SCIENCE IN THE MODERN WORLD

Written examination: 1 hour 30 minutes
40% of qualification

75 marks

A mix of short answer questions, structured questions, extended writing and data response questions with some set in a practical context. A tiered assessment.

Unit 2: (Single Award) SCIENCE TO SUPPORT OUR LIFESTYLES

Written examination: 1 hour 30 minutes
30% of qualification

75 marks

A mix of short answer questions, structured questions, extended writing and data response questions with some set in a practical context. A tiered assessment.

Unit 3: (Single Award) TASK BASED ASSESSMENT

Written examination: 1 hour 30 minutes
20% of qualification

60 marks

A task based assessment which will be externally assessed by WJEC. It will take place in the second half of the autumn term (November - December). It is recommended that this should be in the final year of study. A tiered assessment.

Unit 4: (Single Award) PRACTICAL ASSESSMENT

10% of qualification

30 marks

Practical assessment that will be carried out in centres, but we will be externally marked by WJEC. It will take place in the first half the spring term (January - February). It is recommended that this should be in the final year of study. An untiered assessment.

The WJEC GCSE Single Award course is challenging and requires your son/daughter to apply their knowledge in a range of vocational concepts. To support your son/daughter we have lunch time revision sessions on offer. They could also use the following websites to assist with independent learning: WJEC Science and BBC bitesize.



GCSE English Literature

Year 10 (Sets 1, 2, 3, 4 and 5)

The following table outlines the work undertaken by Y10 classes in Sets 1, 2, 3, 4 and 5.

A lunchtime club is offered every Wednesday, for those wishing to receive further support in English Literature.

	Studying	Information for Parents
Autumn Term	<p>Unseen poetry revision</p> <p>Unit 1 Set Text Study – Of Mice and Men by John Steinbeck</p> <p>Unit 1 Mock Examination</p>	<p>Pupils will be required to analyse and investigate poems at home and school.</p> <p>Reading of the text and past paper questions will be set as homework.</p> <p>Timetabled Mock Examination to be sat in exam conditions.</p>
Spring Term 1	<p>Wednesday 5th January 2022</p> <p>Final GCSE Unit 1 Examination 35% – Of Mice and Men and unseen poetry comparison</p> <p>Unit 3 Shakespeare Controlled Task 12.5%</p>	<p>Additional revision sessions will be provided during the Christmas holidays.</p> <p>Breakfast revision will be provided from 8am before the examination.</p> <p>Pupils will be required to analyse and investigate the text at home and complete research preparation.</p> <p>Reading of the text and past paper questions will be set as homework.</p>
Spring Term 2	<p>Poetry Study</p> <p>Unit 3 Poetry Comparison Controlled Task 12.5%</p>	<p>Pupils will be required to analyse and investigate poems at home and complete research preparation.</p> <p>Reading of the text and past paper questions will be set as homework.</p>
Summer Term	<p>Begin English Language GCSE</p> <p>Unit 1 Oracy—Mock, individual presentation</p>	





Year 10/11

Full Course Welsh Second Language is a New Course for all learners in Wales. There are 4 units to complete in this qualification. Unit 1 and 2 are non-examination assessments and are focused on all skills of Oracy. Unit 3 and 4 are Reading and Writing examinations.

Unit 1	25%	Listening Oral	15% 10%	Year 10 (April)
Unit 2	25%	Oral Listening	20% 5%	Year 11 (April)
Unit 3	25%	Reading Writing (1hr 30m)	15% 10%	Year 11 Exam (June)
Unit 4	25%	Writing Reading (1hr 30m)	15% 10%	Year 11 Exam (June)

The purpose of the changes for the Welsh Second Language qualification is to enable all learners to:

- ✓ understand and use Welsh in various situations
- ✓ develop different skills and strategies of learning a language in order to communicate and interact confidently and spontaneously in situations that will be familiar to each learner
- ✓ develop the skills for listening, speaking, reading and writing in an integrated programme of study, with the main focus on Speaking and listening
- ✓ use the language in other subject, in higher education or the workplace as well as within the community
- ✓ nurture a curiosity for the Welsh language and the meaning of being Welsh

Theme 1	Theme 2	Theme 3
Cyflogaeth	Ieuentid	Cymru a'r Byd
(Employment)	(Youth)	(Wales & the World)



Year 10

Term 1

Topic	Cyflogaeth (Employment) Grammar
Sub topics	Part time work The future Work experience Skills Health & safety
Linguistic skills	<ul style="list-style-type: none">◆ Learn new vocabulary◆ Use familiar sentence structures as well as develop more complex structures◆ Formal letter writing◆ 1 x grammar lesson a fortnight
Assessments	1 x Oracy, Reading and Writing tasks (internal assessment) 1 x grammar test (internal)

Term 2

Topic	Cymru a'r byd (Wales and the world) Grammar
Sub topics	Holidays Tourism Wales Cardiff Welsh language elsewhere (Patagonia)
Linguistic skills	<ul style="list-style-type: none">◆ Continue to learn new topic vocabulary◆ Broaden their range of sentence structures using various tenses◆ Express opinions by discussing fact and backing up with evidence◆ 1 x Grammar lesson a fortnight
Assessments	1 x Oracy and Listening exam (external 25%) 1 x Reading and Writing tasks

Term 3

Topic	Ieuenctid (Youth) Grammar
Sub topics	Music, Fashion Area/ environment Technology School, Food Problems
Linguistic skills	<ul style="list-style-type: none">◆ Develop translating skills◆ Using the different person of the verb◆ Awareness of using a variety of tenses in all work◆ 1 x Grammar lesson a fortnight
Assessments	1 x Reading & Writing exam (internal)

Year 11

Term 1

Topic	Cyflogaeth (Employment)
Sub topics	Voluntary work Bilingualism Welsh in the workplace Charity work
Linguistic skills	Learn new vocabulary Use familiar sentence structures as well as develop more complex structures Using the different person of the verb Develop the skill of correcting mistakes – proof reading
Assessments	1 x Oracy, Reading and Writing tasks (internal assessment) 1 x grammar test (internal) 2 x mock exam (internal)

Term 2

Topic	Oracy exam preparation Reading & Writing exam prep
Sub topics	Past papers Exemplar questions
Linguistic skills	Revisit sentence structures (Orally and written) Revisit how to express opinions (Orally and written) Strengthen their knowledge of answering using 3 rd person. Write exemplar answers to a variety of possible answers
Assessments	1 x Oracy and Reading exam (external 25%)

Term 3

Topic	Revision
Sub topics	Past papers Exemplar questions
Linguistic skills	Revisit sentence structures (Orally and written) Revisit how to express opinions (Orally and written) Strengthen their knowledge of answering using 3 rd person. Write exemplar answers to a variety of possible answers
Assessments	2 x Reading and Writing exams (external 50%)





Welsh Bacallaureate Qualification (WBQ)

What is the new Welsh Bacallaureate?

The Welsh Bacallaureate has changed! The new and improved Welsh Bacallaureate seeks to inspire learners and challenge them to fulfil their potential. It aims to enable learners to develop and demonstrate an understanding of the employability skills that employers and further education establishments value and which learners need for learning, work and life.

The Welsh Bacallaureate is focused about the development and assessment of seven essential and employability skills such as literacy, numeracy, digital literacy, critical thinking and problem solving, planning and organisation, creativity and innovation and personal effectiveness.

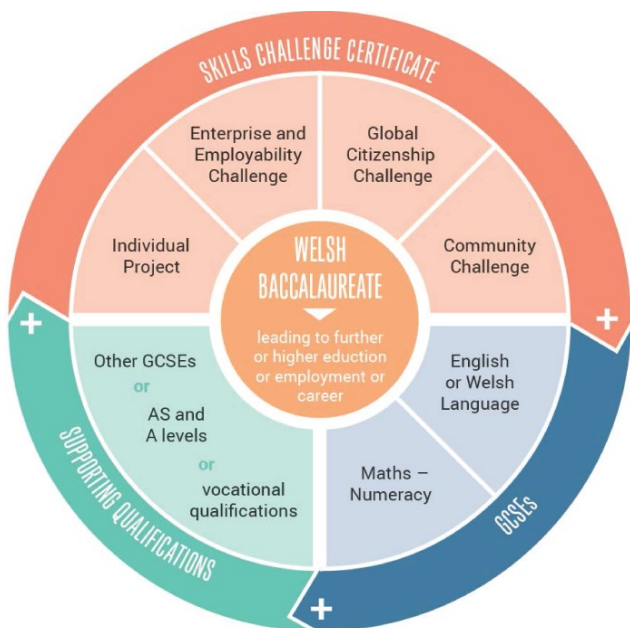


How do you achieve the Welsh Bacallaureate?

There is no Welsh Bacallaureate 'examination', although pupils will be required to complete the assessments for the Skills Challenge Certificate in Year 10 and 11. This consists of four components which are followed by all learners.

Individual Project	Global Citizenship Challenge
Enterprise and Employability Challenge	Community Challenge

Welsh Bacallaureate Key Requirements



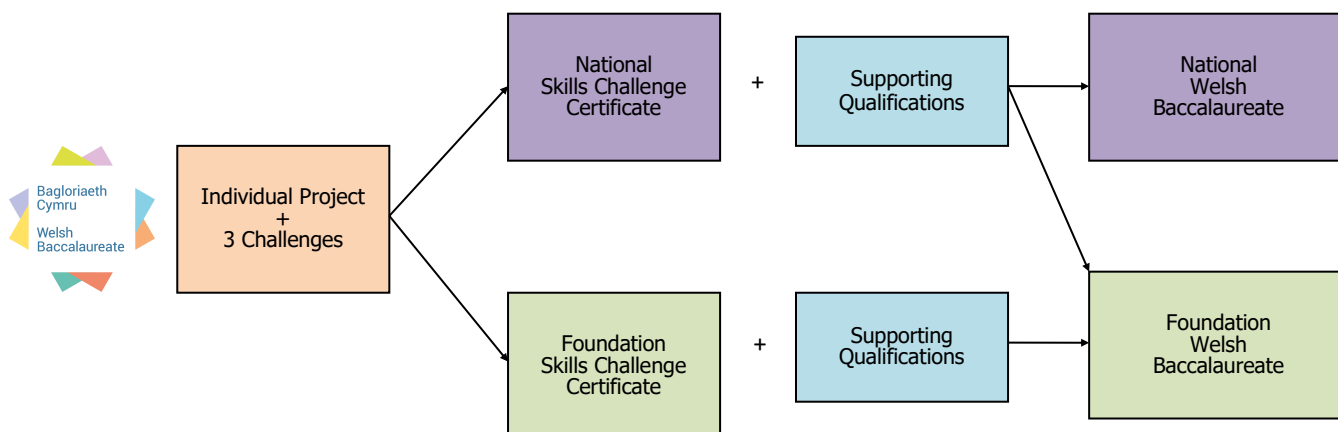
To achieve the **National Welsh Bacallaureate** learners must achieve the National Skills Challenge Certificate together with the following Supporting Qualifications:

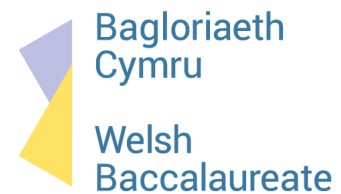
- GCSE English Language at grade A*- C
- GCSE Mathematics – Numeracy at grade A*- C
- A minimum of three further GCSEs grade A*-C, of which two may be equivalent qualifications

To achieve the **Foundation Welsh Bacallaureate** learners must achieve either the National or Foundation Skills Challenge Certificate together with the following Supporting Qualifications:

- GCSE English Language at grade A*- G
- GCSE Mathematics – Numeracy at grade A*- G
- A minimum of three further GCSEs grade A*-G, of which two may be equivalent qualifications

The new Welsh Bacallaureate pathway





Skills Challenge Certificate

- **Individual Project (50%)**
This is an independent, researched based assignment on an individually selected subject. Learners demonstrate the knowledge and skills to produce a written investigation supported by primary research.
- **Enterprise and Employability Challenge (20%)**
For learners to develop enterprising skills and attributes and enhance employability.
- **Global Citizenship Challenge (15%)**
For learners to understand and respond appropriately to a global issue.
- **Community Challenge (15%)**
For learners to identify, develop and participate in opportunities that will benefit the community.

GCSEs

- GCSE English Language and
- GCSE Mathematics or Numeracy

Supporting Qualifications

- 3 other GCSEs or equivalent qualifications

What can you do to help your child?

The new Welsh Baccalaureate will be rigorously assessed. It will be graded, ensuring that hard work and high performance are better rewarded and better recognised by higher education and employers.

It is vital that your child keeps their Welsh Baccalaureate classwork and controlled assessment task up to date. Therefore good attendance is a key to success. To achieve the National Welsh Baccalaureate pupils must achieve a minimum of 5 GCSEs including English and Mathematics or Numeracy at a grade C or above. Monitoring your child's progress in all subject areas will be essential.

CYMHWYSTER
BAGLORIAETH CYMRU | WELSH
BACCALAUREATE
QUALIFICATION



Before you start, plan

We've all done it, spent so long revising the really tough stuff leaving no time for the remaining 90% of our revision. Plan, stick to it and don't panic!



Be Realistic

We'd all love to be Superman and get our revision done in 5 minutes but it isn't going to happen. Working 24 hours a day won't help either. Make sure your plan is manageable in the real world not Metropolis!



The early bird...

Catches the worm, or at least has sensible revision plan. The earlier you start, the less you'll have to do in each block.



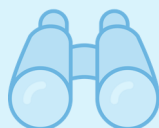
A Room of One's Own

Or corner, or desk, or sofa... Find a good place to revise, whatever works for you, be that a quiet library, your desk, or under a tree.



Mix it up a bit

There are different ways of revising like there are different ways of memorising information. Rather than just copying out, try drawing diagrams, reading aloud, sticking it on post-its on the wall. Whatever helps!



Look to the past

This doesn't involve a time machine, just checking out old exam papers. It can help you plan, revise, and calm you down!



Take regular breaks!

Don't head for information overload. We're not designed to work flat-out and work far more efficiently if we take regular breaks. Try to get up and move around, have a dance if you want. Don't just close the book; make the most of that time off!



Feed & water regularly

Like a car, if you run out of petrol you're not going to get very far. A fed and watered revision brain, is a happy efficient revision brain revving its highly tuned engine!



Testing times

Don't just input, check what you know. You can do this with friends, family, or on your own. Testing is a great way of combating those nerves by confirming what you know, and filling in the gaps!



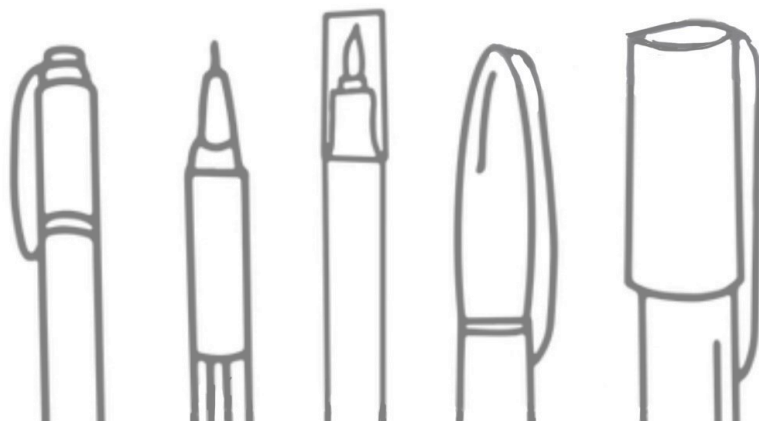
Early to bed

It's the night before the exam. Now you've done all that work it's time to give your brain a rest, so you're in tip top condition for sitting that exam.

Good
luck!

Make sure you have the correct equipment for the exam:

- ✓ Clear Pencil Case
- ✓ Black Pen (not blue!)
- ✓ Pencil
- ✓ Ruler
- ✓ Rubber
- ✓ Calculator
- ✓ Protractor
- ✓ Compass
- ✓ Coloured Pencils for diagrams, maps, charts





Information to Candidates No Mobile Phones, Watches, MP3/4 Players



AQA

City & Guilds

CCEA

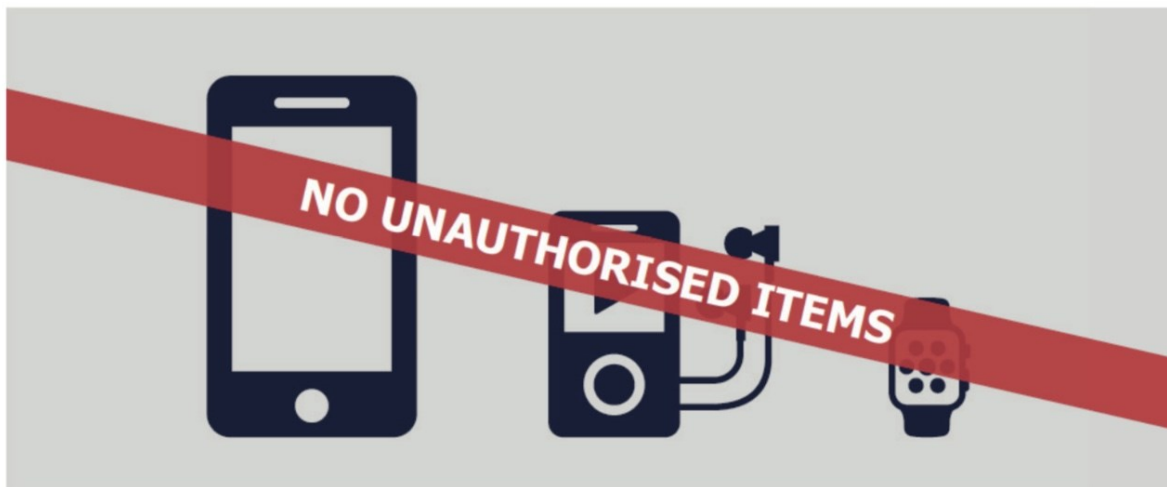
OCR

Pearson

WJEC

NO MOBILE PHONES WATCHES MP3/4 PLAYERS

NO POTENTIAL TECHNOLOGICAL/WEB
ENABLED SOURCES OF INFORMATION



Possession of unauthorised items, such as a mobile phone, is a serious offence and could result in

DISQUALIFICATION
from your examination and your overall qualification.

This poster must be displayed in a prominent place outside each examination room.



AQA	City & Guilds	CCEA	OCR	Pearson	WJEC
-----	---------------	------	-----	---------	------

Warning to Candidates

1. You **must** be on time for all your examinations.
2. **Possession of a mobile phone** or other unauthorised material **is not allowed** even if you do not intend to use it. You will be subject to penalty and possible disqualification from the exam/qualification.
3. You **must not** talk to, attempt to communicate with or disturb other candidates once you have entered the examination room.
4. You **must** follow the instructions of the invigilator.
5. You **must not** sit an examination in the name of another candidate.
6. You **must not** become involved in any unfair or dishonest practice in any part of the examination.
7. If you are confused about anything, only speak to an invigilator.

The *Warning to Candidates* must be displayed in a prominent place outside each examination room. This may be a hard copy A3 paper version or an image of the poster projected onto a wall or screen for all candidates to see.

Information for candidates Using social media and examinations/assessments



This document has been written to help you stay within examination regulations.

Please read it carefully.

We all like to share our experiences when taking examinations. However, it is important to consider what you say and to think about what information is being shared.

Sharing ideas with others online could be helpful when you're studying or revising.

However, there are limits to the amount of information you can share and you need to be careful not to break the rules. We'd like to ask you to act responsibly when discussing online. If you're in doubt about what you can and can't discuss online regarding your exams, it's always best to check with your teacher.

If you receive what is or what looks to be assessment related information through social media, or any other means, you must tell your teacher or another member of staff. You must show them what you have received (if available). They will then report the matter to the awarding body and it will be investigated.

Where candidates breach the rules for examinations, controlled assessments, coursework or non-examination assessments, awarding bodies have an obligation to investigate and may apply penalties.



You need to know that the following would be malpractice:

- copying or allowing work to be copied – e.g. posting written work on social networking sites prior to an examination/assessment;
- collusion: allowing others to help produce your work or helping others with theirs;
- asking others about what questions your exam will include (even if no one tells you);
- having or sharing details about exam questions before the exam - whether you think these are real or fake; or
- not telling exam boards or your school/college about exam information being shared.

Penalties that awarding bodies apply include:

- a written warning;
- the loss of marks for a section, component or unit;
- disqualification from a unit, all units or qualifications; or
- a ban from taking assessments or exams for a set period of time.

Please take the time to familiarise yourself with the JCQ rules:

<http://www.jcq.org.uk/exams-office/information-for-candidates-documents>





2021/22 External Examination Timetable

Please note these provisional timetables are correct at the time of printing but students must consult their individual timetables nearer to the time of the exams to check that no changes or additions have been made.

If you take your child out of school for ANY REASON during the GCSE timetable and they miss an examination, they WILL NOT be able to sit it on a different date.

This is out of the school's control as we are directed by Qualifications Wales.

Ysgol Gymunedol Cefn Hengoed Community School EXTERNAL WRITTEN EXAMINATION TIMETABLE

November 2021 Examination Series

Morning Session – 9am						Afternoon Session – 1pm					
Examination Subject	Unit	Tier	Length	Date	Examination Subject	Unit	Tier	Length	Date		
3700U20-1	English Language	GCSE	2	-	2:00				Mon 1 Nov		
3310U10-1	Numeracy	GCSE	1	F	1:25				Tues 2 Nov		
3310U30-1				I	1:35						
3310U50-1				H	1:35						
3700U30-1	English Language	GCSE	3	-	2:00				Wed 3 Nov		
3310U20-1	Numeracy	GCSE	2	F	1:25				Thur 4 Nov		
3310U40-1				I	1:35						
3310U60-1				H	1:35						
3300U10-1	Mathematics	GCSE	1	F	1:25				Mon 8 Nov		
3300U30-1				I	1:35						
3300U50-1				H	1:35						
3300U20-1	Mathematics	GCSE	2	F	1:25				Wed 10 Nov		
3300U40-1				I	1:35						
3300U60-1				H	1:35						

PROVISIONAL January 2022 Examination Series

Morning Session – 9am						Afternoon Session – 1pm					
Examination Subject	Unit	Tier	Length	Date	Examination Subject	dy	Unit	Tier	Length	Date	
3720U10-1	English Literature	GCSE	1	F	2:00					Wed 5 Jan	
3720UA0-1				H							
4331/01	ICT	GCSE	1		1:30					Thur 6 Jan	
5962U60-1	Understanding Children's Care, Play, Learning & Dev	GCSE	D		1:15					Wed 12 Jan	
9782/01				Retail in Business		Voc	2	1:15			
4333/01	ICT	GCSE	3		1:30					Mon 17 Jan	

PROVISIONAL February 2022 Examination Series

Morning Session – 9am						Afternoon Session – 1pm					
Examination Subject	Unit	Tier	Length	Date	Examination Subject	Unit	Tier	Length	Date		
20460E	Applied Science -Principles of Science	BTEC	1	-	1:00					Wed 2 Feb	

2021/22 External Examination Timetable



Ysgol Gymunedol Cefn Hengoed Community School EXTERNAL WRITTEN EXAMINATION TIMETABLE

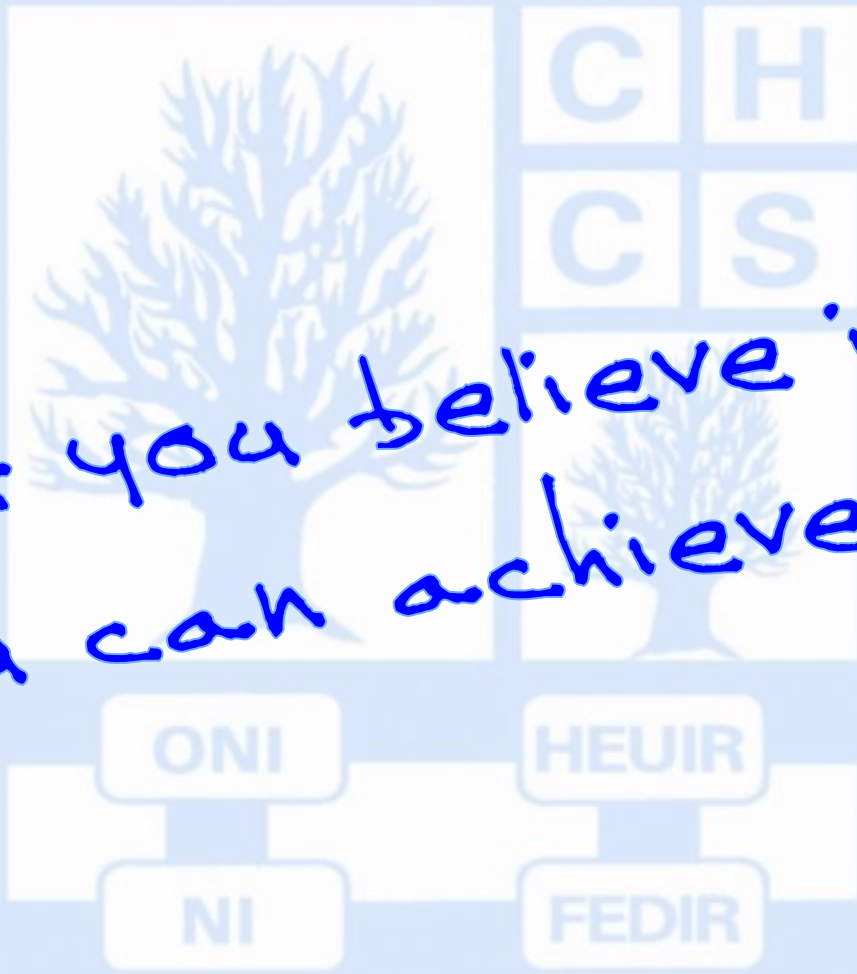
PROVISIONAL Summer 2022 Examination Series

Morning Session – 9am

Afternoon Session – 1pm

Examination Subject	Unit	Tier	Length	Date	Examination Subject	Unit	Tier	Length
3120UB	Religion and Philosophical Themes	GCSE	1B	1:35	Mon 16 May	3570UB0-1	Health & Social Care & Childcare	GCSE 1 1:30
3430U40-1	Double Science - Biology	GCSE	4	F 1:15	Tue 17 May	3020U30-1	Welsh 2 nd Language	GCSE 3 1:30
3430UD0-1		H 1:15						
3440U20-1		F 1:30						
3700U20-1	English Language	GCSE	2	2:00	Wed 18 May	4331-01	ICT	GCSE 1 1:30
3100UC	History Depression, War and Recovery 1930-1951	GCSE	1	1:00	Thur 19 May			
3310U10-1	Mathematics – Numeracy	GCSE	1	F 1:25	Fri 20 May	3550U10-1	Physical Education	GCSE 1 2:00
3310U30-1		I 1:35						
3310U50-1		H 1:35						
3300U10-1	Mathematics	GCSE	1	F 1:25	Tue 24 May	3680U10-1	Media Studies	GCSE 1 1:30
3300U30-1		I 1:35						
3300U50-1		H 1:35						
3720U10-1	English Literature	GCSE	1	F 2:00	Wed 25 May	3570UD0-1	Health & Social & Childcare	GCSE 3 1:30
3720UA0-1		H 2:00						
				Thur 26 May				
3430U50-1	Double Science - Chemistry	GCSE	5	F 1:15	Fri 27 May	3800U20-1	French Listening	GCSE 2 F 0:35
3430UE0-1		H 1:15				3800UB0-1	French Reading	GCSE 2 H 0:45
3310U20-1	Mathematics – Numeracy	GCSE	2	F 1:25	Tue 7 Jun	3800U30-1	French Reading	GCSE 3 F 1:00
3310U40-1		I 1:35				3800UC0-1	French Reading	GCSE 3 H 1:15
3310U60-1		H 1:35				3110U20-1	Geography	GCSE 2 1:30
3720U30-1	English Literature	GCSE	2	F 2:00	Wed 8 Jun	3430U60-1	Double Science - Physics 2	GCSE 6 F 1:15
3720UC0-1		H 2:00			3430UF0-1	Double Science - Physics 2	GCSE 6 H 1:15	
3020U40-1	Welsh 2 nd Language	GCSE	4	1:30	Thur 9 Jun	3120U2	Religious Studies Option B	GCSE 2 1:35
3700U30-1	English Language	GCSE	3	1:30	Fri 10 Jun	4333/01	ICT	GCSE 3 1:30
3100UF	History 2B The USA	GCSE	2	1:00	Mon 13 Jun			
3300U20-1	Mathematics	GCSE	2	F 1:25	Tue 14 Jun	3680U20-1	Media Studies	GCSE 2 0:45
3300U40-1		I 1:35						
3300U60-1		H 1:35						
3430U10-1	Double Science – Biology 1	GCSE	1	F 1:15	Wed 15 Jun	3603U10-1	Design & Technology: Product Design	GCSE 1 2:00
3430UA0-1		H 1:15						
3440U10-1	Applied Science (Single)	GCSE	1	F 1:30	Thur 16 Jun	3800U40-1	French Writing	GCSE 4 F 1:05
3100UK	History 3B Changes to Health & Medicine	GCSE	3	1:15	Fri 17 Jun	3800UD0-1	French Writing	GCSE 4 H 1:15
						3430U20-1	Double Science – Chemistry	GCSE 2 F 1:15
3430U30-1	Double Science - Physics	GCSE	3	F 1:15	Mon 20 Jun	3430UB0-1	Double Science – Chemistry	GCSE 2 H 1:15
3430UC0-1		H 1:15				3560UA0-1	Food & Nutrition	GCSE 1 1:30
3660U30-1	Music	GCSE	3	1:00	Wed 22 Jun			
					Wed 29 Jun			
	Contingency Timetable					Contingency Timetable		

If you believe it,
you can achieve it!



Ysgol Gymunedol Cefn Hengoed Community School